



- 2-hour parking
- Extended parking

**QUARRYMAN HALL**

- Suites - 2nd & 3rd Floor
- Afterglow Spa
- Dominique's House

**MAIN PIER**

- Company Store
- Wine Party
- RH Clothing Co.
- Lime Kiln Café
- Colors Ceremony
- Laundry/Showers
- Restrooms
- Post Office

- AED
- Electric Vehicle Charging Station





# ROCHE HARBOR

EST. 1886

SAN JUAN ISLAND, WASHINGTON

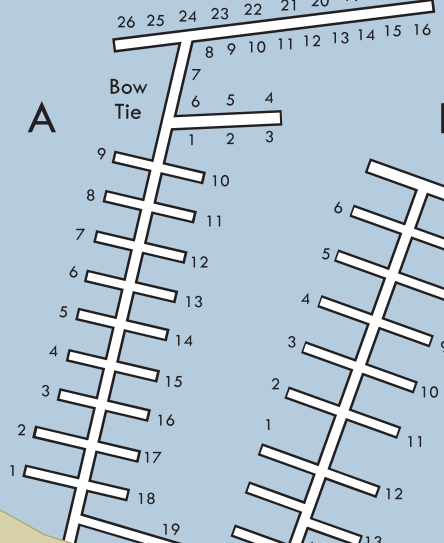
360-378-2155 ROCHEHARBOR.COM

RESTAURANTS	McMillin's Dining Room 360-378-5757
Madrona Bar & Grill * 360-378-9894	
Lime Kiln Café 360-378-9892	
Beechtree Espresso & Ice Cream * 360-378-9893	
SHOPPING & SERVICES	Afterglow Spa 360-378-9888
The Company Store 360-378-5562	
Louella Gifts & Memories 360-370-7732	
RH Clothing Co. 360-370-7735	
Dominique's House 360-378-2605	
Northsound Seafood * 360-317-1549	
Wine Party * 360-378-9801	
Local Artist's Booths *	
TOURS & ACTIVITIES	Marina 360-378-9816
San Juan Outfitters * 360-378-1962	
SJI Sculpture Park 360-370-0035	
Island Boat Rentals 360-317-6160	
Mausoleum	
Roche Harbor Hiking Trails	
Pool *	
Tennis + Pickleball Courts	
Bocce Ball Courts	
Colors Ceremony (at sunset) *	

\* Seasonal operation



### A-Side Tie



**A**

**B**

### MAIN PIER

- Grocery
- Sportswear
- Post Office
- Restrooms
- Showers
- Laundry
- Cafe

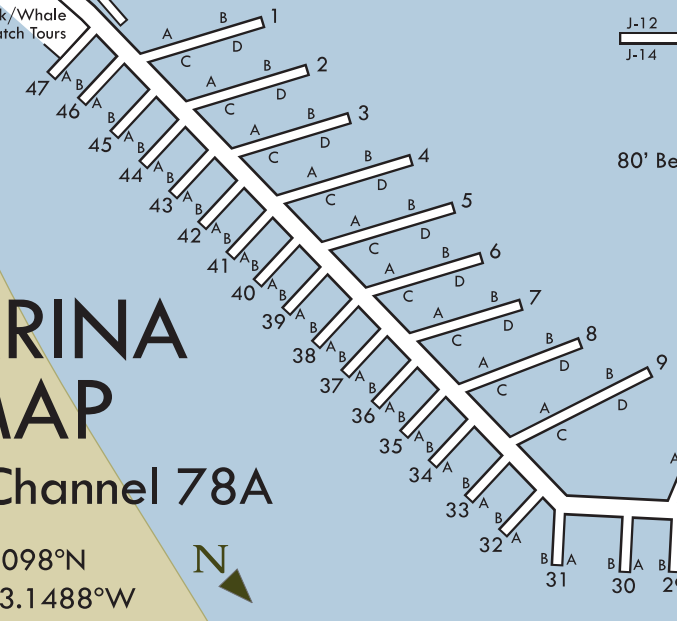
MAIN PIER

Colors

Pump-out

Fuel Dock

Kayak/Whale Watch Tours



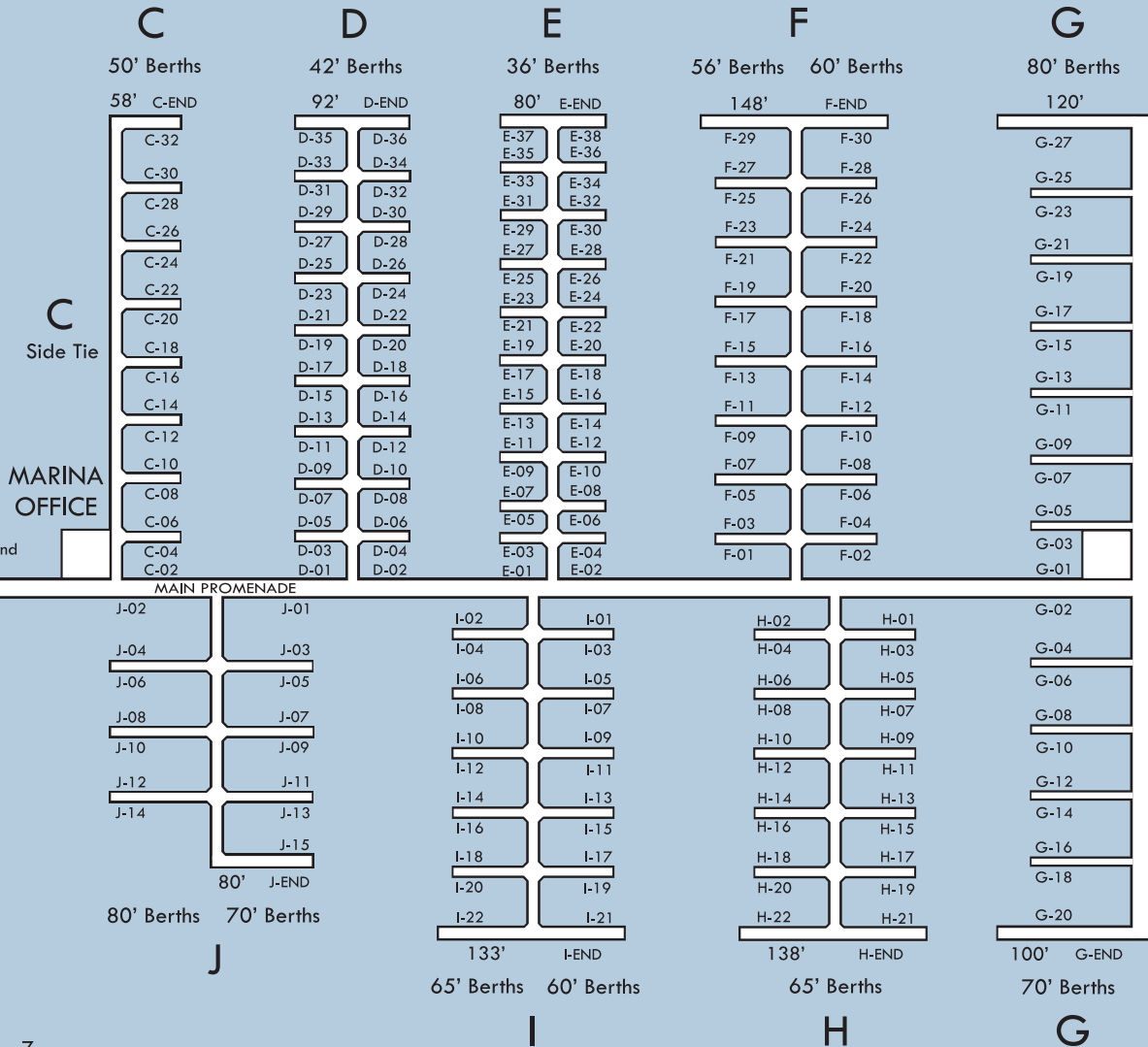
# MARINA MAP

## VHF Channel 78A

Lat 48.6098°N  
Long 123.1488°W



## PERMANENT MOORAGE



MARINA OFFICE

North Sound Seafood

Island Boat Rental

### MAIN PROMENADE

Kenmore Air

CUSTOMS  
Unmanned, Virtual Clearing

Large Vessel Overnight Moorage

### MAIN GUEST DOCK

## ROCHE HARBOR

EST. 1886    SAN JUAN ISLAND, WASHINGTON